

Gardens of Seattle

A Pacific Horticultural Society Tour, escorted by Greg Graves

June 11-17, 2018

Monday, June 11: Seattle Individual arrivals. Check into the Mayflower Park Hotel for a six night stay. The hotel is centrally located in the heart of downtown Seattle walking distance to Pike Place Market, the Waterfront, museums, shops and numerous restaurants. Meet the other guests tonight in the Mayflower Park's Oliver room for a welcome drink followed by dinner at the hotel. **Dinner**

Tuesday, June 12: Seattle After a leisurely breakfast, we depart from the Mayflower Park for a private tour with the head gardener of the Chihuly Garden and Glass. The centerpiece of Chihuly Garden and Glass is the Glasshouse. A 40-foot tall, glass and steel structure covering 4,500 square feet of light-filled space, the Glasshouse is the result of Chihuly's lifelong appreciation for conservatories. The design of the Glasshouse draws inspiration from two of his favorite buildings: Sainte-Chapelle in Paris and the Crystal Palace in London. The Glasshouse has an expansive 100-ft long sculpture in a palette of reds, oranges, yellows and amber.



Next we will have a Food and Cultural tour of world renowned **Pikes Place Market**. We will be treated to several tastings including crab cakes, chowder, and cheese.

This afternoon we will explore **Streissguth Gardens**, an urban oasis and small, family-maintained garden on a steep hillside, this little-known gem in the middle of bustling Seattle offers amazing views of Lake Union, downtown Seattle, and the Olympic Mountains. Plantings have been selected to offer flowers every day of the year. Visitors enjoy winding trails, gurgling ponds, and birdsong. Developed gradually over the course of more than forty years, the gardens have grown from a tangled hillside to about an acre of cultivated woodland and perennial beds.

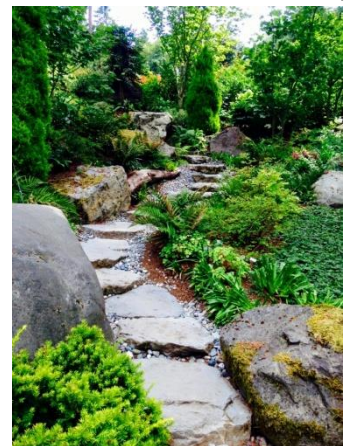
Our final stop is **Miller Botanical Garden** where we will sip a glass of wine on the terrace as we enjoy the intensive horticultural displays. The garden continues in the excellent traditions of gardening that Mrs. Miller insisted upon with planting providing interest that delights the eye all year long. As the seasons change, the highlights of one lead seamlessly into the next. The complex plantings and select plant materials are intended to encourage others to look beyond the ordinary and to challenge their skills as gardeners. **Breakfast, tasting Lunch, Wine reception**

Wednesday, June 13: Vashon Island Today we depart early and travel by ferry to Vashon Island. We begin with a magical, modern woodland garden. The owners, **Pat and Walt Riehl** love ferns and traditional stumperies made popular by Prince Charles at Highgrove. The garden has a tunnel entry and grottos full of tree stumps with the wild romanticism and dense, mossy nature of a rain forest. This is a quintessentially Northwest woodland garden with a dramatic twist. Woodland plants grow between roots and along the edges of the paths. Tree ferns are the garden's glory, growing up to form a lacy understory beneath the taller trees. In winter months, the owner wraps them snugly to protect them from winter cold.



Froggsong Garden is 3 acres tended and created by owners Steve and Cindy Stockett. The garden is done in the Northwest Formal style. This consists of the relaxed style of an English perennial garden with the more formal structure of boxwood elements. The garden hosts a long rose pergola, ponds, knot garden, cascading water features, parterre, a stone ruin and new Earth Works garden. Froggsong has been featured in many publications and calendars. We will enjoy a catered lunch in the garden.

We have been invited to visit the garden of **Whit and Mary Carhart**. Whit spent many hours learning about plants—taking classes, going to conferences, and volunteering at Miller Garden. His knowledge, combined with the assistance of experts contributed to the creation of a fine Japanese garden. Beds around the house contain hostas, mountain laurels, May apples, saxifrages, ligularias, and bold textures. A “Woodland Gazebo” has a stone gathering space circled by “posts” of towering Douglas firs. Plants are in tiers: Japanese maples and snowflake viburnums stretch over ground cover collections of candlelabra, primroses, and unusual ferns, alliums, astrantias, and lewisias, accented with golden Japanese forest grass. The owner says, “We like eye stimulation,” such as the coral colors of the gazebo chairs. Mary places artwork around the garden. She found statues of running kids from an artist from Zimbabwe. The drier Upper Garden on the hillside is planted with moor grasses, sedums, and manzanita. A pond, stream, and waterfall are visible through a MoonGate. **Breakfast, Lunch**





Thursday, June 14: Eastside After breakfast our first visit is to Joanne White's garden. The garden is designed around three large ponds connected by cascading waterfalls and fed by a year-round artesian spring. The ponds were dug when the house was built in 1979 and the garden began about ten years later. Much of the unique plant material has come from specialty nurseries and some was chosen based upon its ability to survive and thrive in the blue

clay that forms the basis for the property: dawn redwood, willow, primrose, Japanese iris, and *Gunnera manicata* which reaches gargantuan proportions by summer's end. At the entry, a massive arbor blends with the post and rail fencing that surrounds the accompanying pastures. Throughout the garden is an assortment of art including a freestanding granite moon gate and a perpetually moving wheel by Andrew Carson.



Denise Lane says "Over 25 years of intense planting and furnishing "garden rooms" with unique hardscape and art has created a one of a kind large garden. A wide variety of growing conditions (wet boggy clay and dry gravel, shade and brilliant sun) allows unusual plants to coexist with bird friendly natives. Beautiful vistas and picture perfect combinations of texture and color echoes surround a custom entertainment terrace with fire trough." Denise has invited us for lunch in the garden.

Bellevue Botanic Garden, our next stop is an urban refuge, encompassing 53-acres of cultivated gardens, restored woodlands, and natural wetlands. The living collections showcase plants that thrive in the Pacific Northwest. The Interactive Garden lets visitors find information about plants and gardening using personal mobile devices or computers. Bellevue's demonstration of good garden design and horticulture techniques inspires visitors to create their own beautiful, healthy gardens.

Our last visit will be to either the private garden of **Kathy and Ed Fries**, or we'll have a docent led tour of **Kubota Garden**. There are twenty acres of hills and valleys, streams, waterfalls, ponds, rock outcroppings and an exceptionally rich and mature collection of plant material.

This urban refuge took over 60 years of vision, effort and commitment by the Kubota family. Fujitaro Kubota was an emigrant from the Japanese Island of Shikoku. He established the Kubota Gardening Company in 1923. He designed and installed gardens throughout the Seattle area. **Breakfast, Lunch**



Friday, June 15: Bainbridge Island Sherri Wilson's garden encompasses two acres, and was started 25 years ago. It was on the Bainbridge in Bloom garden tour in 2001. The borders are a mixture of perennials, shrubs and trees, along with a vegetable garden (complete with a grain auger fountain), berry area, chicken coop and greenhouse made of vintage windows.

Heronswood Garden was founded in 1987, by Dan Hinkley, horticulturalist and Robert Jones, architect. Dan made over 35 trips wild-collecting plants from all over the world. He is a popular speaker renowned for his entertaining and informative photographic presentations. Heronswood Nursery became a successful well known source of rare, unusual plants and made many introductions of new species and cultivars, In 2000, the business was sold to Burpee. Dan and Robert remained to run the business and garden until June of 2006, when Burpee abruptly closed the nursery, and liquidated or relocated most of the plant materials. In August of 2012, the Port S'Klallam Tribe purchased the parcel at auction. A strong volunteer effort led by Dan began restoration of the garden. It is now maintained by a small staff and crew under Dan's direction.

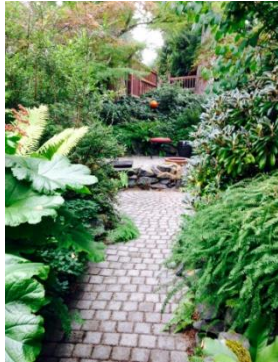
We will enjoy a picnic lunch before our tour of the famed **Bloedel Reserve**. Bloedel is an internationally renowned public garden and forest preserve. The founder's vision was "to provide refreshment and tranquility in the presence of natural beauty." The Reserve's mission is to "enrich people's lives through a premier public garden of natural and designed Pacific Northwest landscapes." The garden is a unique blend of natural woodlands and beautifully landscaped gardens, including a Japanese Garden, a Moss Garden and Reflection Pool. **Breakfast, Lunch**

Saturday, June 16: South End Today our first stop is a visit to the private garden of **Daniel Sparler**, which is a Northwest treasure filled with unusual plants. Daniel calls the garden an assault of three dimensions, depth and color.

Powells Wood Garden, a Northwest pleasure garden has a series of exquisite hedges which define several distinct garden rooms graced with more than a thousand varieties of trees, shrubs and perennials. The woodland and shade gardens demonstrate how private landowners can use natural land features to develop stunning landscapes. We'll stroll down the walking paths next to a meandering stream and pond.



Next we travel to the **Rhododendron Species Botanical Garden** dedicated to the conservation, public display, and distribution of Rhododendron species. Home to one of the largest collections of species rhododendrons in the world, the garden displays over 700 of the more than 1,000 species found in the wilds of North America, Europe, and Asia, as well as the tropical regions of southeast Asia and northern Australia.



We continue to **Julia Graham's** garden. Situated on a sloped acre looking out to Mt. Rainier, this residential garden focuses primarily on foliage color, texture, and contrast. Meander through the garden along paths that lead through several distinct areas, including: a tranquil woodland featuring Japanese maples, unique shrubs, perennials, and grasses native to the Pacific Northwest and Asia; a colorful poolside container garden; the purple & black courtyard; an organic vegetable garden; and, eclectic spaces in between. The garden changes dramatically in late fall with beautiful reds, oranges, golds, and purples that Japanese maples and other special foliage plants so uniquely offer. The garden is a wildlife sanctuary designed and organically maintained solely by its owners. It is a mature garden, although the owners have a habit of editing and redesigning on a regular basis. This is an award-winning garden that has been featured in numerous regional and national publications. Next we'll see **Camilla Paulsen's** lovely small garden with views of Mt. Rainier.

We end the day at **Old Goat Farm** where Greg and his partner Gary are hosting us for our farewell farm-to-table dinner and a tour. Quite by accident, they discovered this beautiful little place while plant shopping with a good friend. It is located just outside Orting, WA, tucked below Mt. Rainier. They fell in love and a few months later they became the owners. Their goal is to offer well-grown garden plants that are showcased in their garden. We will enjoy dinner al fresco in the garden. **Breakfast, Lunch, Dinner**

Sunday, June 17: Independent departures Breakfast

Tour Price: \$2490 per person based on double occupancy for members of Pacific Horticultural Society

\$ 898 single supplement

\$180 per person supplement for a room with 2 beds (deluxe room)

(the hotel can only offer two beds in deluxe rooms)

Includes:

- 6 nights accommodation at the Mayflower Park Hotel in Classic Rooms
- Welcome reception, 2 dinners, 6 breakfasts, 5 lunches
- Transportation by private motorcoach
- Escorted by Greg Graves

- All entrance fees as per itinerary
- Gifts to private garden owners
- \$250 donation to Pacific Horticulture Society
- Taxes and service charges
- Tip to your driver

Not included:

- Airfare
- Items and events not listed in itinerary
- Travel Insurance

For reservations and further information, contact:

Sterling Tours, Ltd

2907 Shelter Island Drive Suite #105-262

San Diego, CA 92106 Tel: 619 299-3010 x 10 800-976-9497

Email: info@sterlingtoursltd.com www.sterlingtoursltd.com

CST2023849-40